

**Bistro Vest**

Mens' Style #4392  
\$33.99

Womens'  
Style #7392  
\$33.99

**Brocade Vest**

Mens' Style #4390  
\$33.99

Women's  
Style  
#7390  
\$33.99

Black

Gold

Gold

Burgundy

Also available in  
Black (not pictured)

F  
O  
R  
M  
A  
L  
  
W  
E  
A  
R

**Water Repellant Formalwear**

**Women's Tunic Vest.**  
Style #2220V  
size XS to 5XL.  
\$25.99

**Satin Lapel Vest**  
Style #2224V  
size XS to 5XL.  
\$27.99

**5 button, fully lined vest.**  
Style #2023V  
100% polyester, Mens and Women's sizes XS to 5XL.  
\$19.99

**Mock Notch Vest**  
Style #2022V  
100% polyester, Mens and Women's sizes XS to 5XL.  
\$35.99



**Bow Ties**

Style #BT190  
\$3.99 each  
\$39.99 dozen

**Nylon Stretch Gloves**

Style #HS204  
\$4.99 pair  
\$36.99 dozen

**Suspenders**

Style #HS303  
\$7.99  
Style #HS304  
\$7.99



**Tie Sizes  
(Style Numbers)**

- Style #B-01 .....\$3.99 Adjustable Band 1"
- Style #B-015 .....\$3.99 Adjustable Band 1.5"
- Style #BT190 .....\$3.99 Adjustable Band 2"
- Style #B-03 .....\$4.99 Adjustable Band 3"
- Style #C-01 .....\$3.99 Clip-on 1"
- Style #C-015 .....\$3.99 Clip-on 1.5"
- Style #C-02 .....\$3.99 Clip-on 2"
- Style #C-03 .....\$4.99 Clip-on 3"
- Style #KT-01 .....\$5.99 Kentucky Style (Clip-on or Adjustable Band)
- Style #X-0 .....\$5.99 Cross-over tie (with pearl button snap)
- Style #FLP .....\$4.99 Floppy Bow Tie
- Style #J-FLP .....\$5.99 Jumbo Floppy Bow tie
- Style #FLT .....\$4.99 Fluted Bow tie
- Style #DP-02 .....\$6.99 Diamond Point Bow Tie
- Style #RST .....\$6.99 Rosette Tie
- Style #CVD .....\$7.99 Curved Band Tie
- Style #ASCT .....\$7.99 Ascot Tie with Pearl Stick Pin
- Style #FLAIR .....\$6.99 Flair Tie
- Style #LOOP .....\$19.99 Loop Tie
- Style #EURO .....\$12.99 Euro Tie
- Style #TULIP .....\$9.99 Tulip Tie

Light Pink	51		Black	01	Dark Purple	09 Beige	72	Olive 18	Lavend
er 04	Light	Gray 02	Peacock	29	Maroon 45	Orchid 07	Cotton	Candy 45	Sea Spray
20	Aqua 28	Cantalo	upe 73	Brown	99	Scarlet 55	San	Rose 48	Orange
56	Hot Pink 52	Magent	a 65	Purple	05	Mint 23	Turquoise	e 26	Tan
74	Apricot 68	Royal	38	Navy 37	Dior	Blue 32	Dusty	Rose 49	Light Blue

**Poly/Satin Pocket Square**

A. Style #264  
\$3.99

**Poly/Satin Adjustable 4 pleat Cummerbund**

B. Style #1128  
\$8.99

**Poly/Satin Banded Bow Tie**

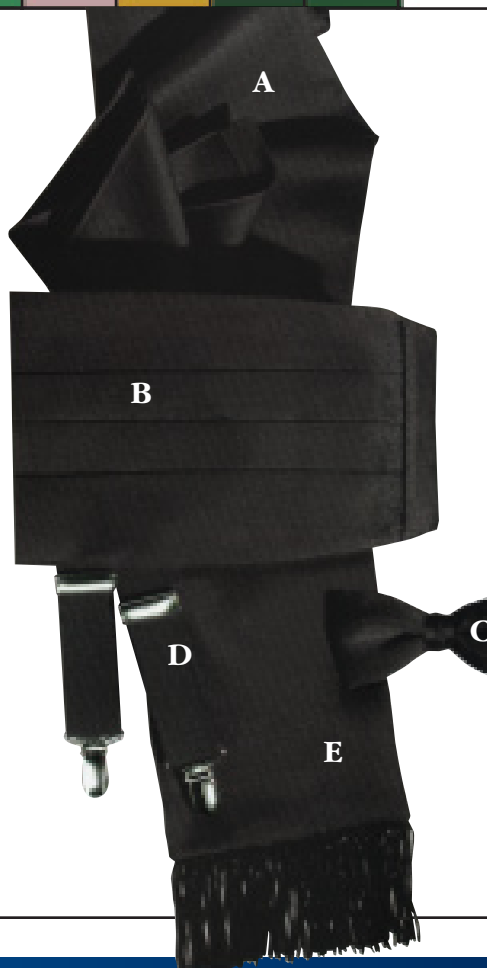
C. Style #BT190  
\$3.99 each / 39.99 doz.

**48" Long Adjustable Clip Suspenders**

D. Style #1250P  
\$7.99

**Poly/Satin Formal Scarf with Fringe**

E. Style #204  
\$13.99



**Call for Pricing on:  
Prints, Paisley and Lurex**

M	Pink	L
M	Red	L
M	Sangria	L
M	Burgundy	L
M	Purple	L
M	Violet	L
M	Grape	L
M	Light Blue	L
M	French Blue	L
M	Royal	L
M	Navy	L
M	Turquoise	L
M	Jade	L
M	Forest	L
M	Kelly	L
M	Kiwi	L
M	Hunter	L
M	Olive	L
M	Mustard	L
M	Maize	L
M	Yellow	L
M	Mango	L
M	Orange	L
M	Burnt Orange	L
M	Natural	L
M	Tan	L
M	Chocolate	L
M	String	L
M	White	L
M	Grey	L
M	Black	L



All Prices are for regular sizes XS - XL upcharges for larger sizes.



**Men's Pique Polo**  
 Style# BG-2201  
 Sizes: XS-8XL, Talls LT-3XLT  
 28 colors  
**\$14.99**

**Ladies Pique Polo**  
 Style# BG-6201  
 S-4XL - 22 Colors!  
**\$14.99**



**Ladies Long Sleeve Fine Line Twill**  
 Style# BG-6213  
 Sizes: S-4XL, 22 colors  
**\$24.99**

**Ladies' Short Sleeve Fine Line Twill**  
 Style# BG-6213S  
 S-4XL, 21 Colors!  
**\$24.99**



**Men's & Ladies 100% Cotton Long Sleeve Fine Line Twills**

Our Men's and Ladies 100% cotton 6.5 ounce fine line twill shirt... the ultimate shirt for dress up or casual wear. Washed and preshrunk for ultimate comfort. Every shirt is reactive dyed (colorfast) to retain it's neat appearance.

**Men's Long Sleeve Fine Line Twill**  
 Style# BG-8213  
 Sizes: XS-8XL, Talls LT-3XLT\*  
 31 colors  
**\$24.99**

**Men's Short Sleeve Fine Line Twill**  
 Style# BG-8213S  
 XS-7XL - 27 Colors!  
**\$24.99**



**EASY-CARE  
COTTON/POLY  
SERVICEWEAR  
PIQUE POLOS  
& POPLIN SHIRTS!**

**Men's S-6XL  
Ladies S-4XL**

**Unif★rms**  
*At Your Service* **USA®**

M	M	M	M	M	M	M	M	M	M	M	M	M	M	M		
Black	Grey	Yellow	String	Chocolate	Tan	Natural	Burnt Orange	Orange	Mango	Yellow	Maize	Mustard	Olive	Hunter	Kiwi	Kelly
L	L	L	L	L	L	L	L	L	L	L	L	L	L	L	L	L

**UNIFORM SOLUTIONS FOR**

Restaurants, Bars  
Construction  
Hotels  
Maintenance  
Sanitation

Hospitality  
Business  
Hospitals  
Trucking  
Retail Stores

Government  
Warehouse  
Schools  
Petroleum  
Landscaping

Security  
Package  
Delivery  
Valet Parking  
Transit



**Ladies' Long Sleeve  
Poly/Cotton Poplin Shirt**  
Style# BG-6216  
No patch pocket, spread collar. 11 colors. Sizes S-4XL  
**\$19.99**

**Ladies' Short Sleeve  
Poly/Cotton Poplin Shirt**  
Style# BG-6216S  
Same as above in short sleeves. 11 colors. Sizes S-4XL. Color shown: Red  
**\$19.99**



**Men's Long Sleeve  
Poly/Cotton Poplin Shirt**  
Style# BG-7216  
Patch pocket, with button down collar. 11 colors. Sizes S-6XL. Color shown: Tan  
**\$19.99**

**Men's Short Sleeve  
Poly/Cotton Poplin Shirt**  
Style# BG-7216S  
Same as above in short sleeves. 11 colors. Sizes S-6XL  
**\$19.99**



**Ladies' Cotton/Poly  
Polo Pique**  
Style# BG-6204  
Offered in 12 brilliant colors. Sizes S-4XL. Color shown: Yellow  
**\$17.99**



**Men's Cotton/Poly  
Polo Pique**  
Style#BG-7204  
Offered in 12 brilliant colors. Sizes S-6XL. Color shown: Royal  
**\$17.99**

**All Styles Not Available in all colors**

**Comfortable and durable 6.5 ounce easy care  
60% cotton / 40% polyester polo pique.  
Wrinkle and crease resistant.**

# SERVICWEAR with Teflon

Forms an Invisible Shield Against Spills & Soil 2 ways:



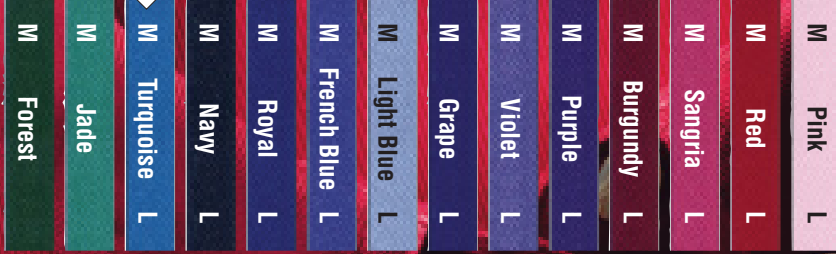
*Liquid and Spills  
Roll off the Fabric*

Teflon is a registered trademark of DuPont.  
Only DuPont makes Teflon

## 1. Repellancy



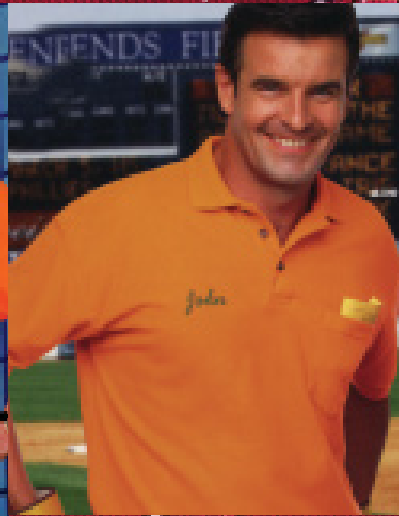
## 2. Stain Release



S  
E  
R  
V  
I  
C  
E  
W  
E  
A  
R

## UNIFORMS USA SERVICWEAR WITH TEFLON

- High Performance Twills and Polo Pique Knits
- Wrinkle & Soil Resistant, Laundry Friendly
- Easy-Care 65% Poly, 35% Cotton Blend
- Men: 13 Brilliant Colors, Sizes XS-6XL
- New Men's Twill Tall Sizes LT-3XLT
- Ladies: 10 Colors, New Sizes Up to 4XL



### Ladies' Teflon Treated Long Sleeve Poly/Cotton Twill

Style# BG-6217  
Spread collar, double back yoke with pleats. Adjustable cuffs with button sleeve placket. No patch pocket. Bone horn buttons. Soft touch finish. Sizes: S-4XL  
10 colors  
**\$25.99**

### Men's Teflon Treated Long Sleeve Poly/Cotton Twill

Style# BG-7217  
Patch pocket with pencil compartment. Double back yoke with pleats. Button down collar. Adjustable cuffs and button sleeve placket. Wood tone buttons. Sizes: XS-6XL, Talls LT-3XLT  
13 colors  
**\$25.99**

### Men's Poly/Cotton Teflon Pocketless Polo Pique

Style# BG-7203  
Available in 13 brilliant colors. Sizes XS-6XL  
Color shown: Orange  
10 colors  
**\$16.99**

### Men's Poly/Cotton Teflon Treated Polo with Pocket

Style# BG-7202  
Available in 13 brilliant colors. Sizes XS-6XL  
Color shown: Orange  
**\$17.99**

### Ladies' Teflon Treated Short Sleeve Poly/Cotton Twill

Style# BG-6217S  
Same as above in short sleeve.  
10 colors  
**\$25.99**

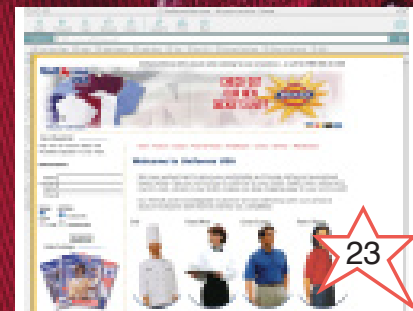
### Men's Teflon Treated Short Sleeve Poly/Cotton Twill

Style# BG-7217S  
Same as above in short sleeve.  
13 colors  
**\$25.99**

### Ladies' Poly/Cotton Teflon Pocketless Polo Pique

Style# BG-6203  
Available in 10 brilliant colors.  
**\$16.99**

VISIT OUR WEBSITE  
[www.uniformsusa.com](http://www.uniformsusa.com)



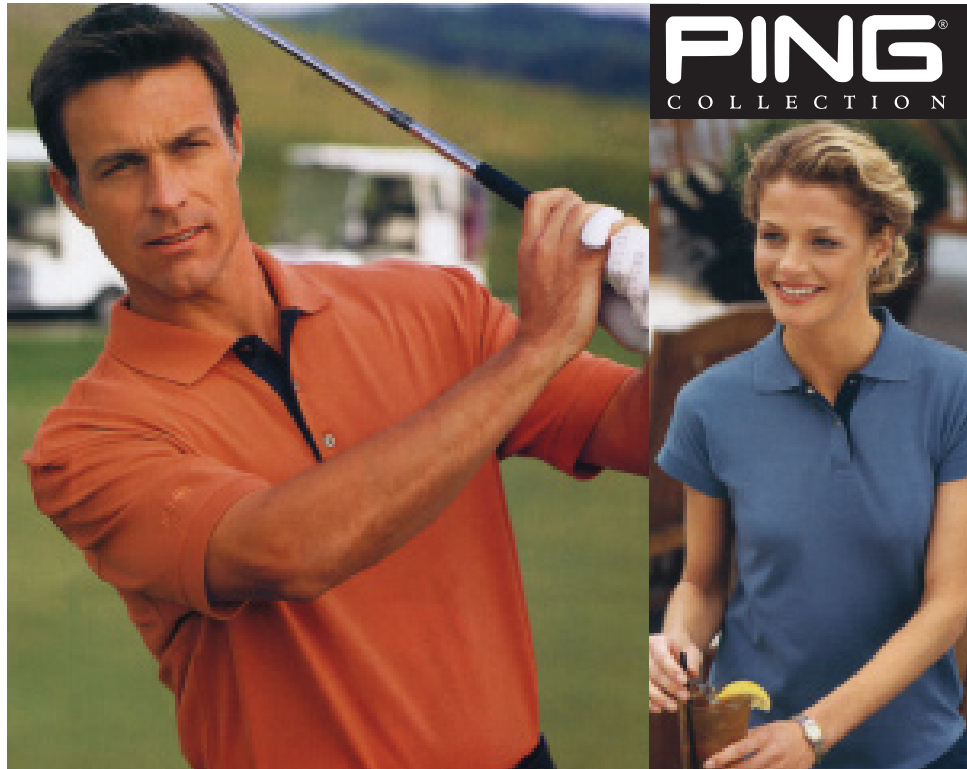
# The Weekend Uniform

Call **Uniforms USA** for details and pricing

P  
R  
E  
M  
I  
U  
M  
  
P  
O  
L  
O  
S

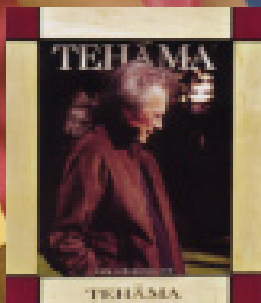


NIKE  GOLF



**PING**  
COLLECTION

**Corporate Outing Incentive Programs Upscale Uniforms**  
or just **The Weekend Uniform**



**LIZ CLABORNE**

- ★ Guaranteed Lowest Prices
- ★ Excellent Customer Service
- ★ Immediate Delivery
- ★ No Minimum Order

*Embroidery*  
**The finishing touch**

**25**  
colors



Sunset Red ML

Steel Grey M

Light Blue ML

ALSO IN POCKET STYLE

Royal M

Yellow ML

Burgundy M

Seafoam ML

Classic Navy ML

White ML

ALSO IN POCKET STYLE

Athletic Gold M

Blueberry ML

Red ML

ALSO IN POCKET STYLE

Pistachio ML

Black ML

ALSO IN POCKET STYLE

Ivory M

Purple ML

Oxford M

Dark Green M

ALSO IN POCKET STYLE

Faded Blue ML

ALSO IN POCKET STYLE

Orange ML

Stone ML

ALSO IN POCKET STYLE

Bark M

Faded Olive M

Navy ML

ALSO IN POCKET STYLE

M = Men's  
L = Ladies



**Pique Knit Sport Shirt**  
Style# K420

7-ounce heavyweight pique, 100% ring spun combed cotton, garment washed; welt collar and cuffs, double needle stitched, side vents, locker patch, horn tone buttons.  
w/o pocket . . . \$17.98  
with pocket . . . \$21.98

P  
I  
Q  
U  
E  
  
K  
N  
I  
T



**Ladies Pique Knit Sport Shirt**

Style: #L420  
Ladies sizes XS-XL  
Plus Sizes 1X, 2X  
\$17.98

- Turquoise
- Light Pink
- Lilac

*Available in Women's Only  
Printed Colors in catalog  
may vary from actual color*

**All Prices are for regular sizes XS - XL  
upcharges for larger sizes.**

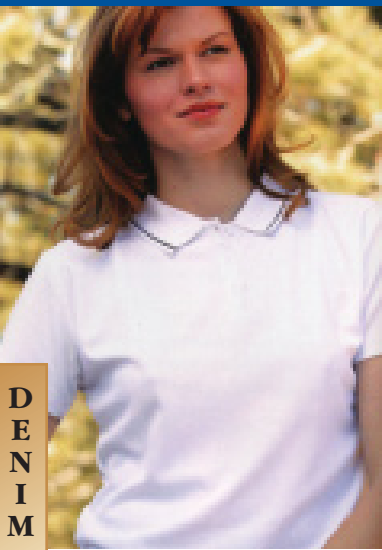
**18**  
colors

*We have your sizes XS-6XL*

To Order: Call 800-441-3401 or fax us at (412) 642-6799

www.uniformsusa.com

25



**Kimberly Women's Microfibre Pique Sport Shirt**

**Style: #PWP**  
 Patented *Permafold collar*, patented *Anti-roll collar*  
 Colors: Black, Navy, White, Red, Light Blue and Butter.  
 Unisex sizes: XS - 2XL

**\$23.99**

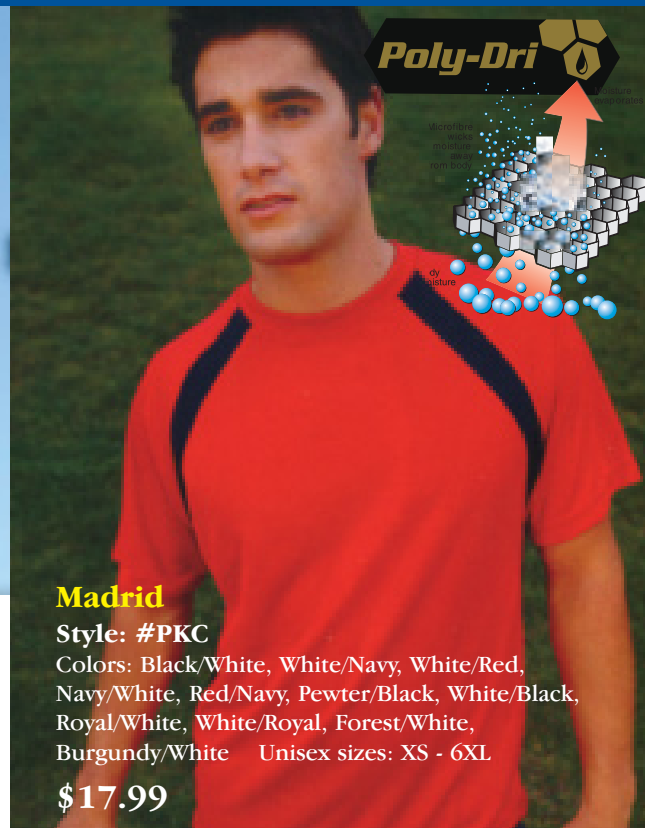


- Navy
- White
- Pewter
- Red
- Forest
- Black

**Kendell Microfibre Pique Sport Shirt**

**Style: #PPM**  
 Features: 100% 3 layer microfibre, Super soft pique knit, 3 button finished placket, Oversize cut, Vented Bottom, Sweet patch. Unisex sizes: XS - 6XL

**\$23.99**



**Madrid**

**Style: #PKC**  
 Colors: Black/White, White/Navy, White/Red, Navy/White, Red/Navy, Pewter/Black, White/Black, Royal/White, White/Royal, Forest/White, Burgundy/White Unisex sizes: XS - 6XL

**\$17.99**



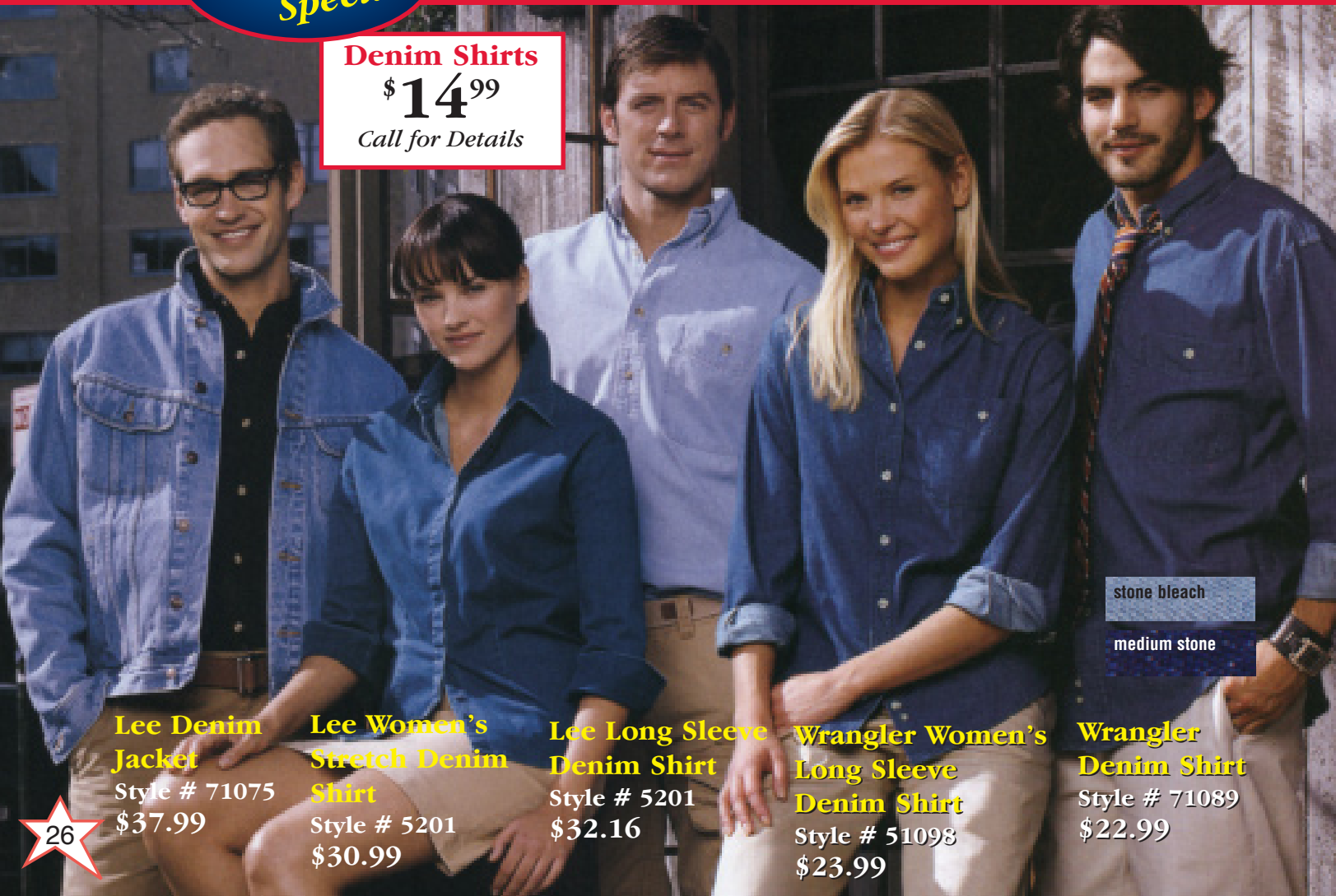
**Lee & Wrangler** BRAND

Rugged, durable and always in style. Put denim to work

**Denim Shirts**

**\$14<sup>99</sup>**

Call for Details



- stone bleach
- medium stone

**Lee Denim Jacket**  
 Style # 71075  
**\$37.99**

**Lee Women's Stretch Denim Shirt**  
 Style # 5201  
**\$30.99**

**Lee Long Sleeve Denim Shirt**  
 Style # 5201  
**\$32.16**

**Wrangler Women's Long Sleeve Denim Shirt**  
 Style # 51098  
**\$23.99**

**Wrangler Denim Shirt**  
 Style # 71089  
**\$22.99**

Embroidered  
with your  
custom logo

\$16<sup>99</sup>

P  
O  
L  
O  
S  
H  
I  
R  
T  
P  
R  
O  
G  
R  
A  
M



white	frost-pink	yellow haze	natural	ash	cobblestone
heather gray	sand	azalea	violet	bimini blue	kelly
red	independence red	lake	royal	forest	ivy
maroon	purple	navy	black		

**Long Sleeve Polo Shirts**

**Style: A. #AN6240**

Long Sleeve Cotton Pique Sport Shirt. 6.8 oz., extra heavyweight 100% preshrunk cotton  
Adult: M-2X available in White, Heather gray, Black, Ivy, Cobblestone, Navy. 3XL Available in White, Heather Gray, Black and Navy

**\$19.99**

2X - \$21.99

3X - \$23.99

**Men's Polo Shirts**

**Style: A. #AN6002**

100% cotton pique, knit collar welt cuffs, clean-finished 3 button box placket, woodtone buttons, double needle bottom hem.

Sizes: S-3XL, available in all colors except frost pink, azalea and violet. 4XL Available in White, Heather gray, Black Navy.

2X	.....	\$18.99
3X	.....	\$19.99
4X	.....	\$20.99

**Women's Polo Shirts**

**Style: B. #AN8602**

100% cotton pique, knit collar, welt cuffs. Reversed placket with pearlized buttons.

Sizes: S-XL available in White, Heather gray, Azalea, Bimini Blue, Frost Pink, Navy, Red, Violet, Yellow Haze. 2XL available in white.

**50/50 Pique**

**Style: C. #AN2002**

50% cotton 50% polyester, 6.5 oz., knit collar and welt cuffs, clean-finished three-button box placket, gloss tone buttons, side seam, drop tail with vents, double needle throughout.

Sizes: S-3XL available in Ash, White, Heather gray, black, Ivy, Navy, Royal.

(Up to 7500 stitches)  
There is a one-time fee to digitize your logo

To Order: Call 800-441-3401 or fax us at (412) 642-6799

www.uniformsusa.com



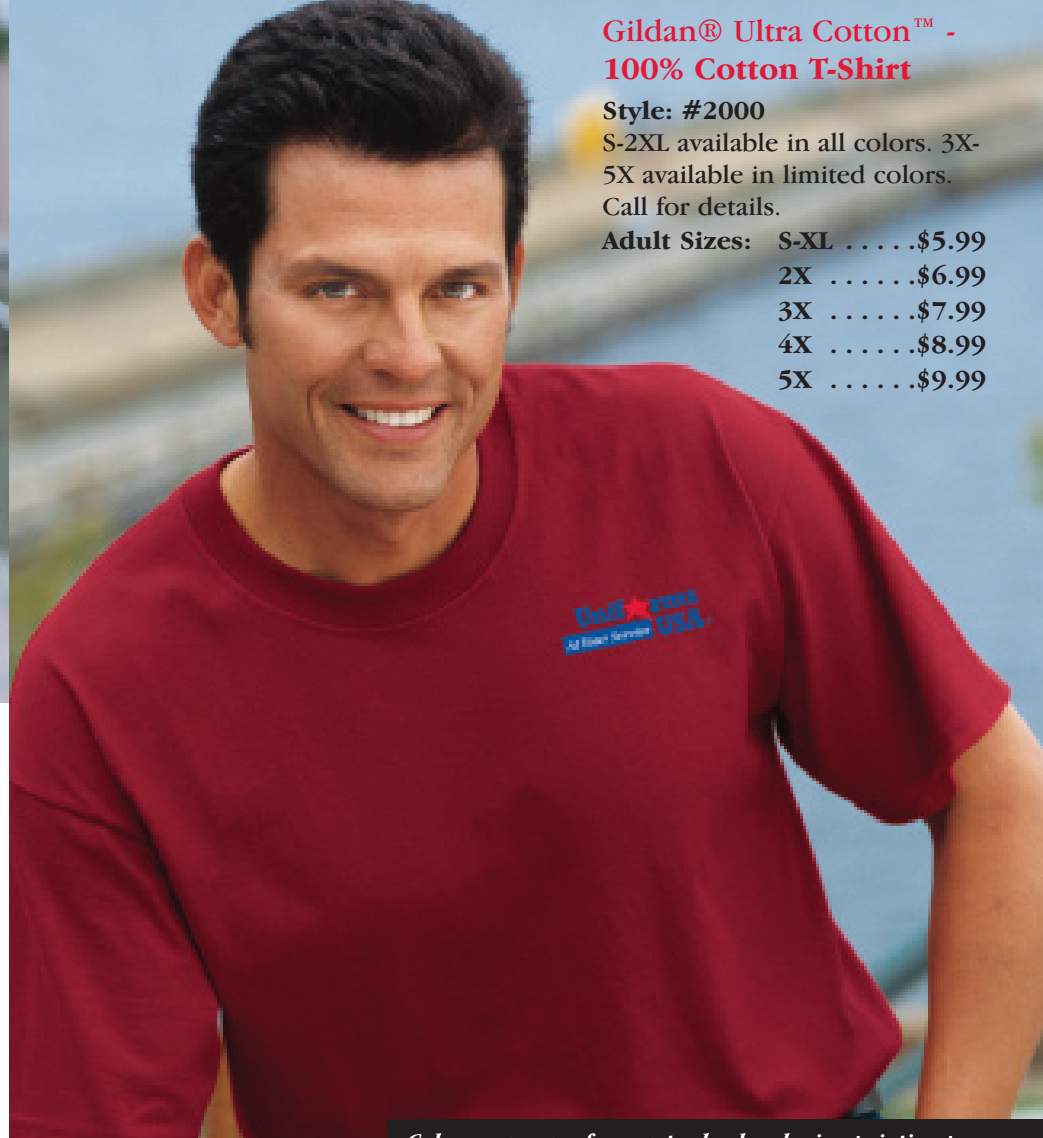


**Gildan® Ultra Cotton™ -  
100% Cotton T-Shirt with Pocket**

**Style: #2300**

6.1 ounce, 100% cotton; (ash is 99% cotton) Limited color selection in this style. Call for details

**Adult Sizes:** S-XL .....\$6.99  
2X .....\$7.99  
3X .....\$8.99  
4X .....\$9.99  
5X .....\$10.99



**Gildan® Ultra Cotton™ -  
100% Cotton T-Shirt**

**Style: #2000**

S-2XL available in all colors. 3X-5X available in limited colors.

Call for details.

**Adult Sizes:** S-XL .....\$5.99  
2X .....\$6.99  
3X .....\$7.99  
4X .....\$8.99  
5X .....\$9.99



**Screen Printing and  
Custom Embroidery**  
*The Finishing Touch*

**Gildan® Ultra Cotton™ -  
100% Cotton Long Sleeve**

**Style #2400**

S-3XL available in all colors.  
4XL and 5XL available in  
White, Sport Gray, Black  
and Navy.

**Adult sizes:**  
S-XL ....\$7.99  
2X ....\$8.99  
3X ....\$9.99  
4X ....\$10.99  
5X ....\$11.99



*Colors may vary from actual color during printing process*

white	ash	ice gray
natural	light pink	yellow haze
vegas gold	sand	serene green
daisy	gold	tangerine
light blue	sport gray	stone blue
key lime	tan	azalea
carolina blue	violet	oceana
prairie dust	jade	heliconia
sapphire	iris	steel
orange	texas orange	pine
chestnut	kelly green	military green
indigo blue	leaf	charcoal
red	cedar	cardinal red
dark heather	royal	metro blue
olive	eggplant	purple
blue dusk	dark charcolate	maroon
forest green	navy	black